

CalDigit FASTA-2ex Card



CalDigit

For more information visit www.caldigit.com

CalDigit

Fast, Reliable and Secure Storage Solutions

Apple, Apple Logo, Mac, the Mac logo and Macintosh are trademarks of Apple Inc.
Microsoft, Windows and Windows Logos are registered trademarks of the Microsoft Corporation.

All other trademarks are the property of their respective owners.

*Specifications and package contents are subject to change without notice.

Contents

Introduction	4
General Use Warnings	5
Safety Warnings	5
System Requirements	6
Installing the CalDigit FASTA-2ex ExpressCard 34	7
Driver Installation	9
PC	9
Mac	11
Technical Support & Warranty Information	14
Technical Support	14
CalDigit Warranty Information	14

Introduction

Thank you for purchasing the CalDigit FASTA-2ex Card. This card plugs into the ExpressCard 34 slot on your laptop computer.

Before you install your CalDigit FASTA-2ex, please read this installation guide carefully.

If you do not understand the procedures described in this guide, it is recommend to consult with a CalDigit Certified Dealer for assistance.



General Use Warnings

Please make sure you read this manual thoroughly before using the CalDigit FASTA-2ex Card.

Avoid using the CalDigit FASTA-2ex Card in extreme environments as it will increase the likelihood of premature failure. A safe temperature is between 40°F – 95°F.

Please do not get the CalDigit FASTA-2ex Card wet as it can cause electrical shock and fire.

Minimum System Requirements

Mac

- OS X 10.5.6 or later
- MacBook Pro with available ExpressCard slot
- 256 MB RAM (512MB recommended)

PC

- Windows XP/Vista/7 32/64 bit OS or later
- PC laptop with available ExpressCard slot
- 256 MB RAM (512MB Recommended)

Specifications

2-Port SATA 6G PCI ExpressCard

Compliant with PCI Express Base Specification 2.0

SATA 6G

ExpressCard/34 Module Form Factors

Supports 2 eSATA ports

Compliant with PCI Express Base Specification 2.0

Compliant with Serial ATA Specification 3.0

Supports all SATA communication speed data rate of 6.0 Gbps / 3.0 Gbps / 1.5 Gbps

Supports AHCI 1.0

Supports Native Command Queuing (NCQ)

Dimensions:

L x W x T:

112.32mm (4.42in) x 34.0mm (1.34in) x 5.0mm (0.20in)

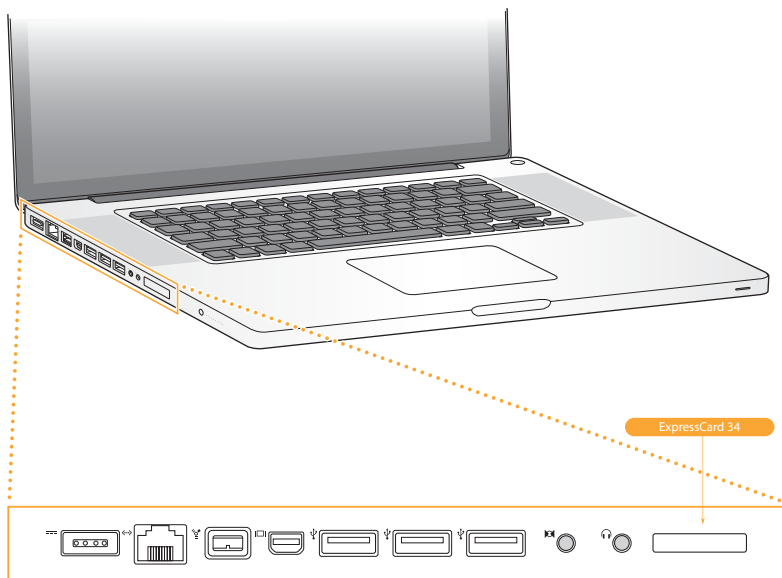
Environment:

Ambient Operating Temperature: 0°C ~ 85°C (32°F ~ 185°F)

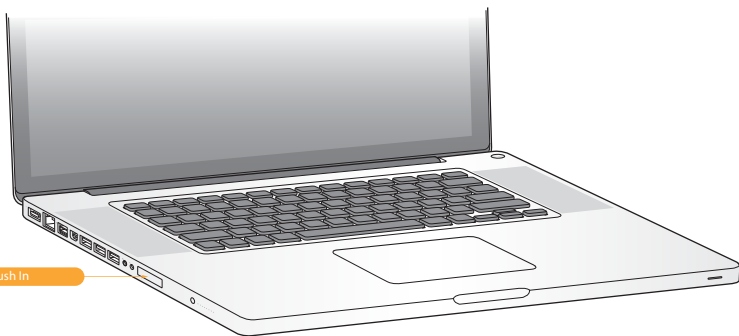
Ambient Storage Temperature: -20°C ~ 125°C (-4°F ~ 257°F)

Installing the CalDigit FASTA-2ex Card

- 1 Make sure the CalDigit FASTA-2ex drivers are installed, see the Driver Installation section of the manual for more details.
- 2 To install the CalDigit FASTA-2ex, we recommend the laptop is turned off, but it is not required.
- 3 Insert the CalDigit SuperSpeed Express Card for Laptop in the ExpressCard/34 slot by sliding it in until it locks into place.



- 3 To remove the CalDigit FASTA-2ex, make sure all connected devices are unmounted and disconnected.
- 4 Windows - Use the remove hardware wizard to disconnect the CalDigit SuperSpeed ExpressCard for Laptop.
Mac - Use the ExpressCard menu bar to disconnect the CalDigit SuperSpeed ExpressCard for Laptop.
- 5 Push the card towards the laptop, the spring latch will release and the card will slide back.



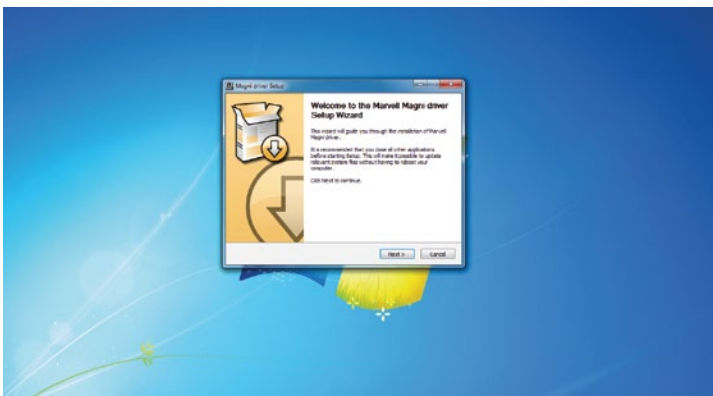
Driver Installation

Prior to using the CalDigit FASTA-2ex Card, you must download and install the appropriate driver (note which version OS you have).

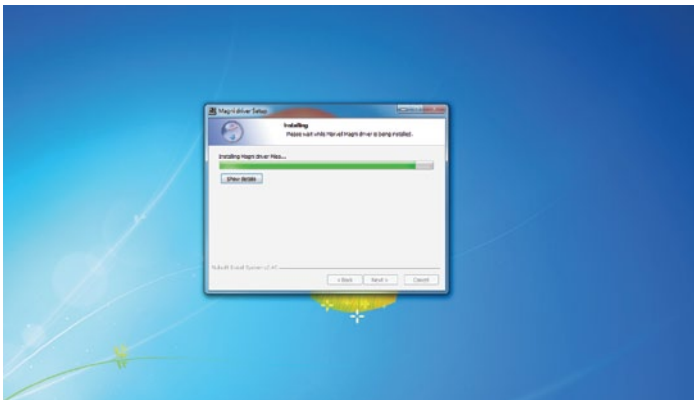
Drivers can be found at <http://www.caldigit.com/support.asp>

PC

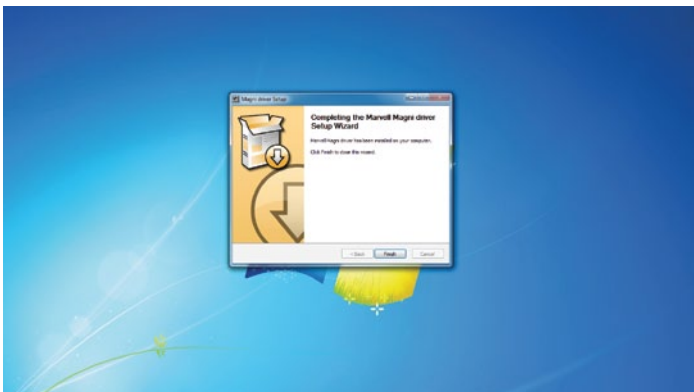
- 1 Download and run the appropriate driver file.
- 2 Select CalDigit FASTA-2ex Card.
- 3 Select Windows Driver to start installation wizard.
- 4 Select next to continue.
- 5 Read through the End User License Agreement, select Accept to agree to the terms, and click next to continue with the wizard.
- 6 Click next to continue.



7 Select Install to start the installation.



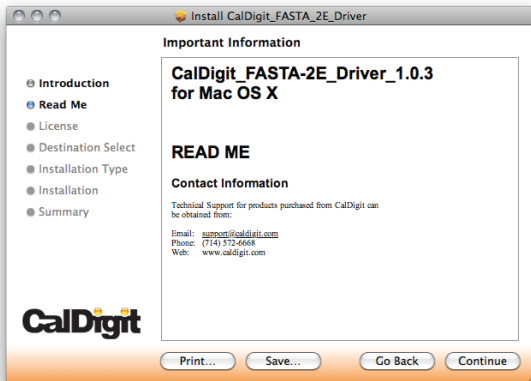
8 After installation has been completed, select Finish to close the Wizard.



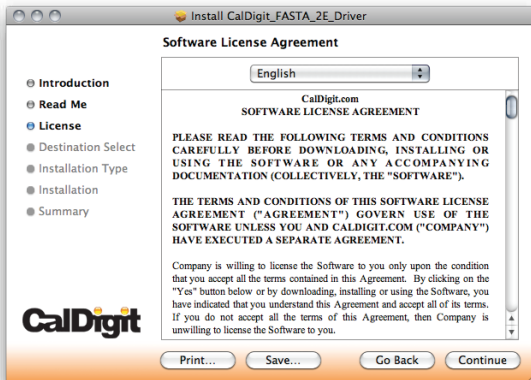
9 The CalDigit FASTA-2ex Card will now appear in device management, if the CalDigit FASTA-2ex Card has been installed.

MAC

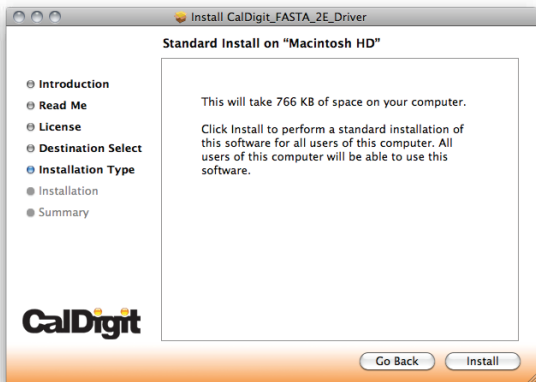
- 1 Download and run the appropriate driver file.
- 2 The installer will open, click Continue.



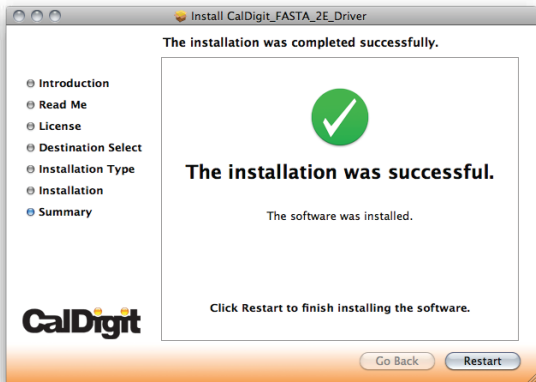
- 3 The Software License Agreement will appear. Select Continue. You must accept the License agreement to proceed with the driver installation.



- 4 Select the destination where you want to install the driver then click Continue. Always use the same volume as the OS. Then select Install. A warning will appear stating that you must restart your computer once the driver is installed. Select Continue installation to proceed.



- 5 After the software has finished installing, select Restart to finish the installation process.



- 6 Once your computer has restarted, you will be able to see the CalDigit FASTA-2ex Card on your System Profiler.



Technical Support & Warranty Information

Technical Support

If you run into any issues while installing your CalDigit FASTA-2ex Card please contact CalDigit Technical Support:

support@caldigit.com
www.caldigit.com/support.asp
1(714)572-6668 or +44 (0) 845 835 0372

When contacting CalDigit Technical Support, make sure to be at your computer and have the following information available:

- Your serial number
- Operating system and version
- Computer brand and model
- Other devices attached to your computer

You can also post on the CalDigit forum at the Creative Cow:
www.creativecow.net

CalDigit Warranty Information

For detailed CalDigit warranty information please see the CalDigit website:
www.caldigit.com/rma/Limited-Warranty.pdf

CalDigit FASTA-2ex Card Manual v1.0

www.caldigit.com

© 2011 CalDigit, Inc. All Rights Reserved